

A woman in athletic wear is jogging on a paved path in the foreground. To her right is a grassy area and a body of water. In the background, a large, modern building with a glass and wood facade stands under a clear blue sky. A large pine branch hangs from the top left corner.

# Northwestern University

## Public Events

September 2017

Northwestern

NEIGHBORHOOD AND  
COMMUNITY RELATIONS

Subscribe to this publication by emailing  
Carol Chen at [carol.chen@northwestern.edu](mailto:carol.chen@northwestern.edu)



# Table of Contents

## **Overview**

Fall Event Highlights .....	3
-----------------------------	---

## **Northwestern Events**

### Arts

Music Performances .....	8
Exhibits .....	9
Theatre .....	12
Film .....	13

### Living

Leisure and Social .....	14
<i>Norris Mini Courses</i>	
<i>Around Campus</i>	
<i>ARTica (art studio)</i>	
<i>Norris Outdoors</i>	
<i>Northwestern Music Academy</i>	
Religious Services	

### Sports, Health, and Wellness

Northwestern Wildcat Athletics .....	19
Recreation .....	26

### Academic Lectures

One Book, One Northwestern: Danielle Allen, <i>Our Declaration</i> .....	27
Academic Lectures .....	28

*Evanston Campus Map and Parking Information*

## Northwestern University

### **Neighborhood and Community Relations**

1603 Orrington Avenue, Suite 1730

Evanston, IL 60201

[www.northwestern.edu/communityrelations](http://www.northwestern.edu/communityrelations)

### **Alan Anderson**

Executive Director

[alan.anderson@northwestern.edu](mailto:alan.anderson@northwestern.edu)

847-467-5762

**To receive this publication electronically every month, please email Carol Chen at [carol.chen@northwestern.edu](mailto:carol.chen@northwestern.edu)**

### *Cover image*

Public pathways along the lake with views of the Ryan Center for the Musical Arts. Photo by Jim Prisching.

# Fall Event Highlights

September-December 2017

Join us on campus for events this fall as we welcome our community and help us kick off a new school year!

## SEPTEMBER



### Campus Art Walk

*Self-guided and free*

The Arts Circle features 16 sculptures gifted by donors Mary and Leigh Block and other supporters. They are located outdoors and in indoor public spaces around Northwestern's Arts Circle, as well as in a sculpture garden designed by renowned Chicago architect John Vinci. You are invited to explore these campus art works and visit the Block Museum of Art—they are free and open to all.

[Download the map here.](#)

### William Blake and the Age of Aquarius

*Sat, 9/23 to Sun, 3/11, free*

*Block Museum of Art, 40 Arts Circle Drive*

*Contact: Block Museum, 847-491-4000*

Many of the artists, poets and musicians associated with the "Summer of Love" in 1967 embraced the work of British visionary poet and artist William Blake (1757–1827) and used it as a compass to drive their own political and personal evolutions. Opening at the Block Museum this fall, *William Blake and the Age of Aquarius* will explore Blake's impact on a broad range of American artists in the post-World War II period. This exhibition will be the first to consider how Blake's art and ideas were absorbed and filtered through American visual artists from the end of World War II through the 1960s. Blake became for many a model of non-conformity and self-expression, and was seen as an artist who engaged in social and political resistance in his time.



### Evanston MashUp

*Tues, 9/12, 5:30-9:30 PM, \$95 until 9/6 and \$125 afterwards or \$50 for those 35 years and under*

*Norris University Center, 1999 Campus Drive*

*Contact: Evanston Chamber of Commerce, jvb@hooplacroupla.com*

Join Northwestern and Evanston for a night of conversations, food, and music at this business and community mixer. Co-hosted by Evanston Mayor Steve Hagerty and Northwestern President Morton Schapiro, this event embodies the spirit of collaboration and the positive impact of their powerful partnership.

### 'Kits, 'Cats, and Kids Block Party

*Thurs, 9/14, 4:45-7:30 PM, free*

*Sherman Avenue and Clark Street*

*Contact: Katie Stankiewicz,  
katherine.stankiewicz@northwestern.edu,  
847-467-3758*

Evanston residents of all ages are invited to celebrate the back to school season at the annual 'Kits, 'Cats, and Kids Block Party. There will be games, arts and crafts, family-friendly activities filling the street, live music, the ETHS Marching Band and NU Marching Band, rousing pep rally-style speeches, and lots of dining options. The first 200 hot dogs are free, sponsored by First Bank & Trust. Discounted football tickets for the 9/16 Northwestern vs. Bowling Green game will be sold, and can also be purchased at [www.nusports.com](http://www.nusports.com) with code "PURPLE" until 9/15.





### **Northwestern Football vs. Bowling Green (Evanston Day!)**

Sat, 9/16, 6:30 PM kickoff, tickets \$20-40

Ryan Field, 1501 Central St, Evanston

Contact: Northwestern Athletics, 888-467-8775 We celebrate Evanston as the 'Cats face Bowling Green's Falcons. Join the free pre-game at Wildcat Alley just northeast of Ryan Field at 3:30 PM for face-painting, giveaways, Willie the Wildcat, and our marching band. Then, cheer on the 'Cats as they come roaring into the 2017 season after its Pinstripe Bowl victory last year!

## **OCTOBER**

### **9th Annual CIERA Public Lecture Series – Cosmologist Wendy L. Freedman**

Thurs, 10/5, 7:30-8:30 PM, free

Cahn Auditorium, 600 Emerson St, Evanston

Contact: Gretchen Oehlschlager, CIERA-Events@northwestern.edu

The Center for Interdisciplinary Exploration and Research in Astrophysics (CIERA), our astronomy outreach group, welcomes famed cosmologist Wendy L. Freedman from the University of Chicago as she leads an exploration of the universe's origins. Freedman is world-renowned for leading a team of astronomers who measured the current expansion rate of the universe, allowing a much more precise determination of the universe's age as 13.7 billion years old with only 10% uncertainty.



### **Northwestern vs. Penn State (Homecoming)**

Sat, 10/7, 11:00 AM, ticket \$45+

Ryan Field, 1501 Central St, Evanston

Contact: Northwestern Athletics, 888-467-8775

Cheer on the 'Cats as we take on the Penn State Nittany Lions during Homecoming and Reunion Weekend. Be sure to join us at the free pre-game at Wildcat Alley just northeast of Ryan Field prior to the game for face-painting, giveaways, Willie the Wildcat, and our marching band.



### **Evanston Day of Caring**

Sat, 10/14, 8:00 AM-12:00 PM, **free but registration required**

Ryan Field's Wild Café, 1501 Central St, Evanston

Contact: Lori Anne Henderson, la-henderson@northwestern.edu, 847-491-3612

All are invited to join Northwestern, the City of Evanston, and United Way for a morning of volunteering in the community. Last year, volunteers deployed all over Evanston to help local non-profits and organizations serve those in need. Free breakfast will be served. Registration opens in early September.

### **Open House Chicago**

Sat, 10/14 and Sun, 10/15, check website for opening times that vary by site, free

Evanston and Chicago

Contact: Eric Rogers, erogers@architecture.org

Experience Ryan Field as an insider, tour Millar Chapel, be an astronomer at Dearborn Observatory, and explore Deering Library, along with other local venues throughout Evanston and Chicago. Get insider access and special tours, and be on the lookout for sites that are normally not available for public viewing!

CHICAGO ARCHITECTURE FOUNDATION

**OPENHOUSE**  
**CHICAGO**  
OCT 14-15 • 2017



### **Danielle Allen, Keynote Address**

*Thurs, 10/19, 4:30 PM, free and no tickets required  
Tech, Ryan Family Auditorium, 2145 Sheridan Road  
Contact: Nancy Cunniff, 847-467-2294,  
onebook@northwestern.edu*

Hear the author of *One Book One Northwestern* pick *Our Declaration: A Reading of the Declaration of Independence in Defense of Equality* deliver a keynote address. Copies of the book will be available for sale ahead of the book signing to follow the speech.



Allen is a mixed-race woman descended from slaves and from a family active in pushing for civil rights. It was in reading the Bible with her family as a child that she first learned lessons about how people might slip the bonds of slavery and obtain equality. Widely known for her work on justice and citizenship in both ancient Athens and modern America, Allen is the author of five other books and a 2001 MacArthur Foundation Fellow. She is currently Director of the Edmond J. Safra center for Ethics and James Bryan Conant University Professor at Harvard.



### **Yekwon Sunwoo, 2017 Van Cliburn Gold Medalist**

*Fri, 10/27, 7:30 PM, \$30 public, \$10 students  
Galvin Recital Hall, 70 Arts Circle Drive  
Contact: Bienen Ticket Office, 847-467-4000*

Powerful and virtuosic South Korean pianist Yekwon performs on his tour after winning the prestigious Van Cliburn competition held every four years. Part of the Skyline Piano Artist Series.

- Schubert, Sonata in C Minor, D. 958
- Grainger, *Ramble on the Last Love Duet* from Richard Strauss' *Der Rosenkavalier*
- Rachmaninoff, Sonata No. 2 in B-flat Minor, Op.36
- Ravel, *La valse*



### **Chicago Humanities Festival at Northwestern**

*Sat, 10/28, see website in early September for times and tickets*

*Note that the events at Northwestern are on 10/28 but the festival runs until 11/12  
Multiple locations on campus and other Chicagoland locations*

*Contact: Jill Mannor, 847-467-3970, jill.mannor@northwestern.edu*

Join thought leaders for a day centered on the theme of “belief”: faith in the divine, commitment to a cause, conviction about the truth, trust in our institutions? What kind of future do we believe in? Northwestern scholars and thought leaders will lead discussions on campus in conjunction with a Chicago-wide festival. Go to [chicagohumanities.org](http://chicagohumanities.org) on September 6 to see the linup!

## **NOVEMBER**



### **Ice Skating Rink Grand Opening**

*Wed, 11/1, time TBD, free*

*Norris University Center, 1999 Campus Drive*

*Contact: Melinda Weaver, 847-491-2333, maw752@northwestern.edu*

Enjoy a winter wonderland on the ice with food, music, and fun. Open every day until February. Those who have a Wildcard or are the guest of someone who does can rent skates; other community members are welcome to bring their own skates.



### **Stellaluna**

*Fri, 11/3 to Sun, 11/19, \$12 adult/ \$10 student*

*Wallis Theater, 1949 Campus Drive*

*Contact: Wirtz Center Box Office, 847-491-7282*

When a baby fruit bat named Stellaluna is separated from Mother Bat in the forest, she is adopted by a family of birds who teach her their boisterous, baby bird ways. Young audiences will delight in the music, artistic puppetry, and dance, empathizing with Stellaluna as she swoops and crashes through the forest trying to be just like her feathered friends. Nocturnal adventure awaits in this luminous adaptation from the internationally-renowned artists at Speeltheater Holland, of the beautiful picture-book classic about friendship, self-discovery, celebrating differences, and trying new things. Recommended for ages 3-8.



### **Company**

*Fri, 11/3 to Sun, 11/19, \$30 adult/\$27 seniors/\$25 educators/\$20 NU faculty and staff*

*Barber Theater, 30 Arts Circle Drive*

*Contact: Wirtz Center Box Office, 847-491-7282*

From musical theatre's most renowned composer, Stephen Sondheim, *Company* is largely regarded as a trailblazer of the dark-comedy, modern-musical genre and the winner of seven Tony Awards. Jeff Award-winning director and TimeLine Theatre Associate Artist Bill Brown directs this classic musical featuring a brilliantly brisk and energetic score with many of Sondheim's best known songs.



### **Men's Basketball vs. Loyola Maryland**

*Fri, 11/10, time TBD, individual ticket prices TBD  
([season ticket sales here](#))*

*Allstate Arena, 6920 Mannheim Rd, Rosemont*

*Contact: Northwestern Athletics, 888-467-8775*

Cheer on the 'Cats in their first game of the 2017-18 season as they play in the Allstate Arena while the Welsh-Ryan Arena undergoes a complete renovation.

## **DECEMBER**



### **Festive French Fare Concert**

*Fri, 12/8, 7:30 PM, \$30 public/\$10 students*

*Pick-Staiger Concert Hall, 50 Arts Circle Drive*

Pianist Jeffrey Siegel performs Debussy's *Clair de lune* and sensuous *Isle of Joy*, Ravel's ravishing *The Fountain* and famous *Pavane*, Fauré's scintillating *Impromptu*, and Satie's humorous *Ragtime Parade*.

### **Women's Basketball vs. Minnesota**

*Thurs, 12/28, Time TBD, individual ticket prices TBD  
([season ticket sales here](#))*

*Evanston Township High School, Beardsley Gym, 1600 Dodge Ave, Evanston*

*Contact: Northwestern Athletics, 888-467-8775*

Cheer on the women's team in the season opener as they play home games at ETHS during the 2017-18 season during Welsh-Ryan's renovation.







# Music Performances



The Arts Circle. Your destination for the arts at Northwestern.

With world-class exhibitions and performances, the Arts Circle welcomes patrons, students, faculty, staff, alumni, and the larger community alike. It's easier than ever to take in many wonderful and diverse experiences, all on one campus.



## Duo Montagnard

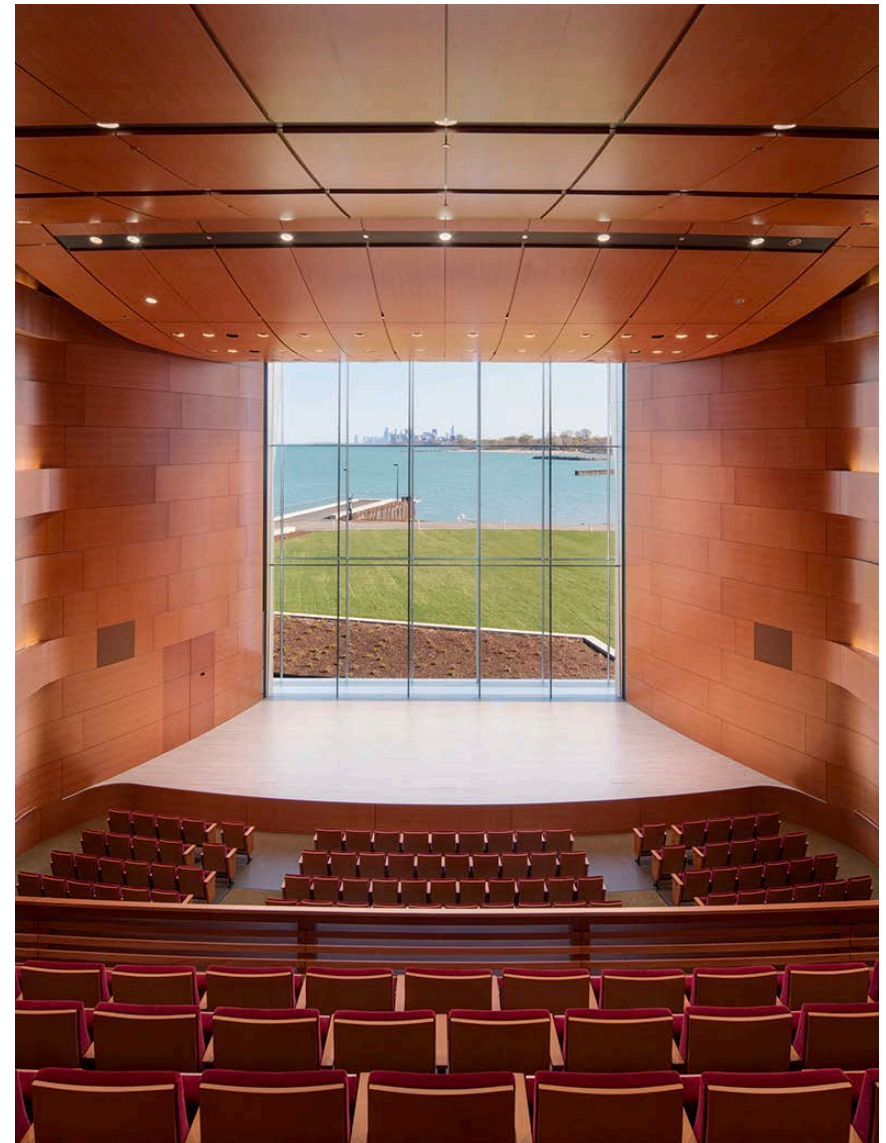
*Sun, 9/24, 7:30 PM, \$8 public/\$5 students*

*Galvin Recital Hall, Ryan Center, 70 Arts Circle Dr, Evanston*

*Contact: Bienen Ticket Office, 847-467-4000*

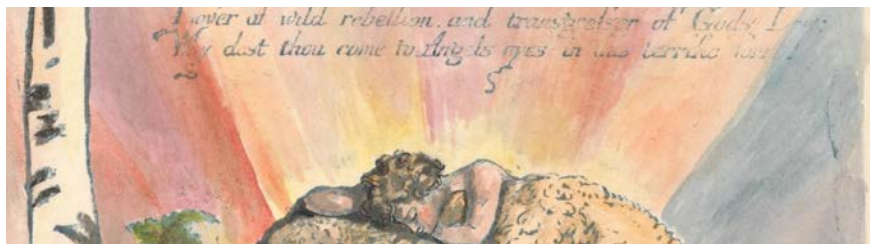
*Joseph Murphy, saxophone; Matthew Slotkin, guitar*

Joseph Murphy is the saxophone professor at Pennsylvania's Mansfield University and a Selmer clinician who has recorded on the Erol, Opus One, and Mark Records labels. Matthew Slotkin is director of the guitar program at Pennsylvania's Bloomsburg University and has recorded on the Summit, Centaur, and Liscio labels. Since 2002 they have performed over 300 concerts on six continents as Duo Montagnard. Their festival appearances have included Chautauqua, the Scandinavian Saxophone Festival, and the Radford University International Guitar Festival. The duo has commissioned, premiered, and recorded music by James Crowley, Jonathan Elliott, Laura Kramer, John Anthony Lennon, John Orfe, and Russell Peterson. This program features music by Northwestern alumni Marilyn Shrude, Charles Stolte, Kirk O'Riordan, James Crowley, and Mark Engebretson.





## Exhibits



### William Blake and the Age of Aquarius

Sat, 9/23 to Sun, 3/11, free

Block Museum of Art, 40 Arts Circle Dr, Evanston

Contact: 847-491-4000, [block-museum@northwestern.edu](mailto:block-museum@northwestern.edu)

In the summer of 1967, more than 100,000 young people streamed into the Haight-Ashbury district of San Francisco and the Sunset Strip in Los Angeles, as well as Greenwich Village in New York and Old Town in Chicago, to celebrate peace, love, music, and mind-altering drugs. Many of the artists, poets and musicians associated with the "Summer of Love" embraced the work of British visionary poet and artist William Blake (1757–1827) and used it as a compass to drive their own political and personal evolutions. Opening at the Block Museum in the fall of 2017, William Blake and the Age of Aquarius will explore the impact of British visionary poet and artist William Blake on a broad range of American artists in the post-World War II period. This exhibition will be the first to consider how Blake's art and ideas were absorbed and filtered through American visual artists from the end of World War II through the 1960s. Blake became for many a model of non-conformity and self-expression, and was seen as an artist who engaged in social and political resistance in his time.

William Blake and the Age of Aquarius will consider parallels between Blake's time and mid-twentieth-century America, touching on such issues as political repression, social transformation, and struggles for civil rights. Blake's protests against the conventions of his day were inspirational for many young Americans disillusioned by perceived cultural tendencies of social uniformity, materialism and consumerism, racial and gender discrimination, and environmental degradation. This generation sought in Blake a model of independence, imagination, and resistance to authority. The exhibition will feature American artists for whom Blake was an important inspiration and will include more than 130 paintings, prints, drawings, photographs, films, and posters, as well as original Blake prints and illuminated books from collections throughout the United States.

### Opening Day Celebration: William Blake and the Age of Aquarius

Sat, 9/23, 10:00 AM-1:00 PM, free

Block Museum of Art, 40 Arts Circle Dr, Evanston

Contact: 847-491-4000, [block-museum@northwestern.edu](mailto:block-museum@northwestern.edu)

Celebrate the imaginative spirit that unites Blake and the Age of Aquarius. Make an original print with Chicago-based print collective Spudnik Press, follow your muse with typewritten Poems While You Wait, groove to WNUR DJs and be part of Old Town School of Folk Music "Counter Culture Jam Sessions with Jimmy T & Mary Peterson." Bring a guitar, bring your voice - join in the jam!

### Opening Day Conversation: "Blake, Now and Then" with Stephen Eisenman and W.J.T. Mitchell

Sat, 9/23, 2:00 PM, free

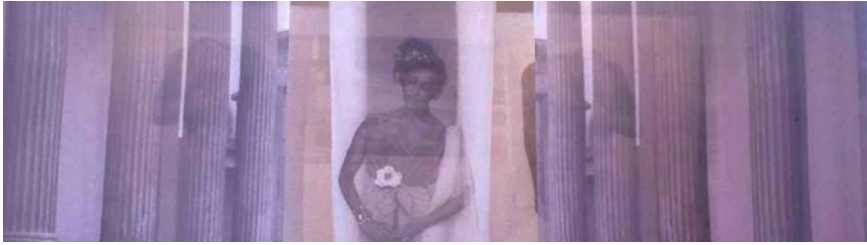
Block Museum of Art, 40 Arts Circle Dr, Evanston

Contact: 847-491-4000, [block-museum@northwestern.edu](mailto:block-museum@northwestern.edu)

The Block Museum exhibition, William Blake and the Age of Aquarius kicks off with an opening day conversation between Northwestern University Professor of Art History and exhibition Curator, Stephen Eisenman and W.J.T. Mitchell, Blake scholar, editor of "Critical Inquiry" and Gaylord Donnelley Distinguished Service Professor of English and Art History at the University of Chicago.

The illustrated discussion "Blake, Now and Then" will look comparatively at three periods in the reception of Blake: the first is his own time, when he was virtually unknown, a neglected outsider artist whose work could have easily disappeared except for a few devoted friends; the second is the period of modernism from the pre-Raphaelites to Yeats, Eliot, Pound, Bataille, and Joyce; the third is the "long 1960s," starting with the Beat Generation and moving into the era of Marshall McLuhan, the rise of the New Left, the Hippies and counterculture. The conversation will conclude with the question of our own time: what is Blake's relevance to our moment?





### **Carrie Mae Weems, Ritual and Revolution**

*Tues, 9/12 to Sun, 12/10*

*Block Museum of Art, 40 Arts Circle Dr, Evanston*

*Contact: 847-491-4000, block-museum@northwestern.edu*

A practicing artist since 1978, Carrie Mae Weems (b. 1953) often creates works that blur the lines between fiction and documentary to explore universal human experiences through the black subject. Over the years Weems' photographic practice has expanded to include video, performance, and multi-media installations. *Ritual and Revolution* (1998) is an immersive, gallery-sized installation that marks one of the artist's earliest forays into three dimensions. Composed of 18 diaphanous printed cloth banners organized in a semi-architectural formation and a poetic audio track, *Ritual and Revolution* explores the historic human struggle for equality and justice, including references to the Middle Passage, the French Revolution, World War II, among others. Carrie Mae Weems' work has been exhibited nationally and internationally since the 1980's and was the subject of a traveling mid-career retrospective, *Carrie Mae Weems: Three Decades of Photography and Video*, which culminated with a presentation at New York's Guggenheim Museum in January-May of 2014. She has received numerous awards and fellowships including a MacArthur Genius Award in 2013. The Block is presenting this work for the first time since it entered the museum's collection.

An editioned work, *Ritual and Revolution* is part of the 2016 gift of 68 works of contemporary art to the Block Museum from art collector, philanthropist, and software innovator Peter Norton. The Block gift is one of a series of gifts Norton has made to university art museums throughout the country. The gifts were made in recognition and support of those institutions advancing innovative work to integrate art into teaching and learning across disciplines, foster creative museum practices, and engage audiences with diverse forms of contemporary art.

### **Ritual and Revolution: Janet Dees and Grace Deveney on Carrie Mae Weems**

*Wed, 9/27, 6:00 PM, free*

*Block Museum of Art, 40 Arts Circle Dr, Evanston*

*Contact: 847-491-4000, block-museum@northwestern.edu*

Renowned American artist, Carrie Mae Weems creates works that blur the lines between fiction and documentary to explore universal human experiences through the black subject. Composed of diaphanous printed cloth banners and a poetic audio track, Weems' *"Ritual and Revolution"* (1998) considers the historic human struggle for equality and justice.

Please join Janet Dees, Steven and Lisa Munster Tananbaum Curator of Modern and Contemporary Art and Grace Deveney, Curatorial Assistant, Museum of Contemporary Art, Chicago, and Northwestern Ph.D. Candidate in Art History, for a conversation about this important work.



*Carrie Mae Weems*





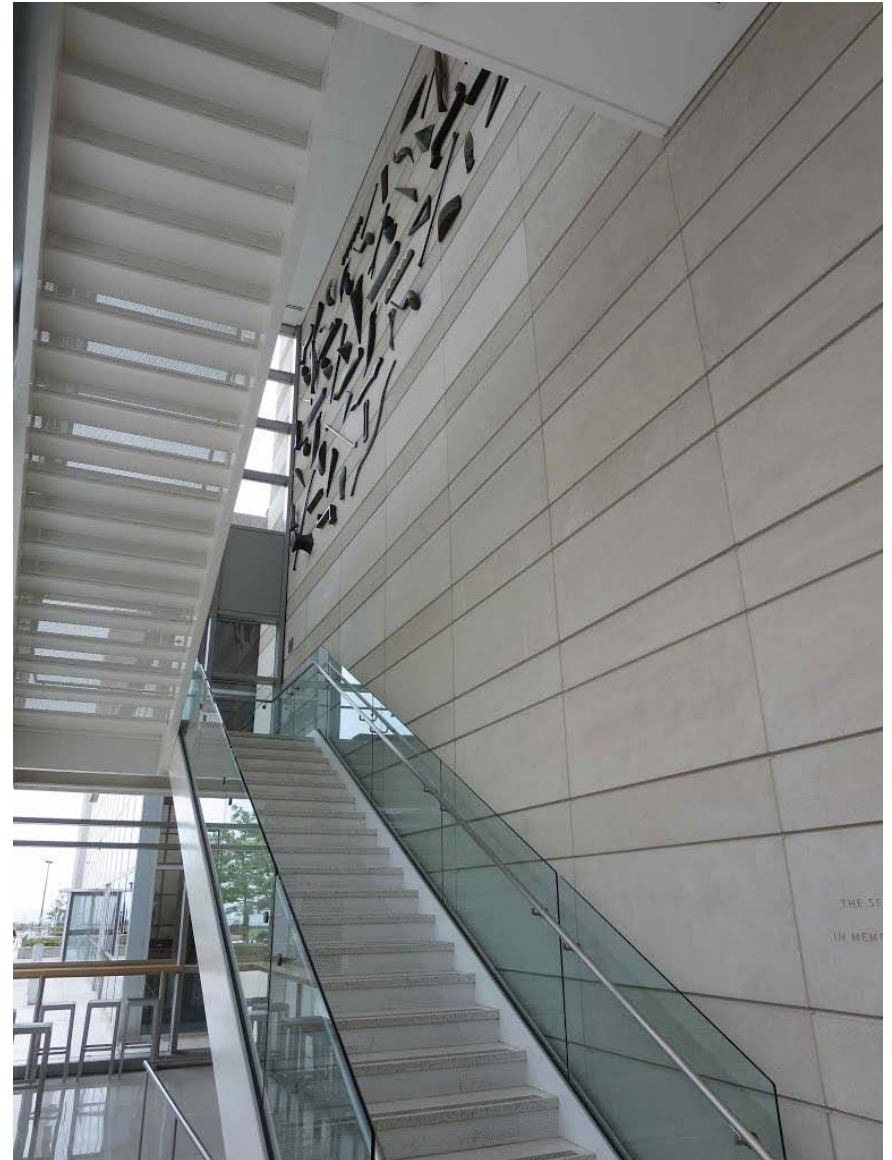
### **Looking Life Right Straight in the Face: The Art of Purvis Young**

*Sat, 9/23 to Sun, 12/10*

*Block Museum of Art, Katz Gallery, 40 Arts Circle Dr, Evanston*

*Contact: 847-491-4000, [block-museum@northwestern.edu](mailto:block-museum@northwestern.edu)*

This exhibition of paintings and drawings by the self-trained artist Purvis Young (1943-2010), will feature works that were a recent gift to the Block Museum with key loans that represent the themes which absorbed him throughout his career. For much of his life Young lived and worked in the Overtown section of Miami. His paintings, rendered in ink or paint on found materials ranging from scrap lumber, manila folders, and wallpaper books, center on a small, repeating group of images that included horses, trucks, trains, lines of people, and close-up images of the faces, sometimes behind bars.



# Theatre



## Stage Russia HD: Anton Chekhov's *The Seagull*

Sat, 9/16, 2:00 PM, \$20 public/\$16 NU employee/\$10 full-time student

Ethel M. Barber Theater, 30 Arts Circle Drive, Evanston

Contact: Wirtz Center Box Office, 847-491-7282

Anton Chekhov's first of four major plays dramatizes the romantic and artistic conflicts between its four main characters: Boris Trigorin, a well-known writer, the ingenue Nina, the fading actress Irina Arkadina, and her son the would-be playwright Konstantin Tréplev. Yury Butusov's frenetic production abounds in an incredible freedom and openness, delving deep into the throes of artistic creation and the anguish of the artist who struggles to find a language of his own.



## National Theatre Live: *Rosencrantz & Guildenstern are Dead*

Thurs, 9/21, 7:00 PM, \$20 public/\$16 NU employee/\$10 full-time student

Ethel M. Barber Theater, 30 Arts Circle Drive, Evanston

Contact: Wirtz Center Box Office, 847-491-7282

Against the backdrop of Hamlet, two hapless minor characters, Rosencrantz and Guildenstern, take center stage. As the young double act stumble their way in and out of the action of Shakespeare's iconic drama, they become increasingly out of their depth as their version of the story unfolds.

Daniel Radcliffe (*Harry Potter*, *The Woman in Black*), Joshua McGuire (*The Hour*) and David Haig (*Four Weddings and a Funeral*, *The Witness for the Prosecution*) star in Tom Stoppard's brilliantly funny situation comedy. Suitable for ages 12+.



## National Theatre Live: *Angels in America Part One – Millennium Approaches*

Sat, 9/23, 2:00 PM, \$20 public/\$16 NU employee/\$10 full-time student

Ethel M. Barber Theater, 30 Arts Circle Drive, Evanston

Contact: Wirtz Center Box Office, 847-491-7282

## National Theatre Live: *Angels in America Part One – Perestroika*

Sat, 9/23, 7:00 PM, \$20 public/\$16 NU employee/\$10 full-time student

Ethel M. Barber Theater, 30 Arts Circle Drive, Evanston

Contact: Wirtz Center Box Office, 847-491-7282

America in the mid-1980s. In the midst of the AIDS crisis and a conservative Reagan administration, New Yorkers grapple with life and death, love and sex, heaven and hell. Andrew Garfield (*Silence*, *Hacksaw Ridge*) plays Prior Walter along with a cast including Denise Gough (*People, Places and Things*), Nathan Lane (*The Producers*), James McArdle (*Star Wars: The Force Awakens*) and Russell Tovey (*The Pass*).

This new staging of Tony Kushner's multi-award winning two-part play, *Angels in America: A Gay Fantasia on National Themes*, is directed by Olivier and Tony award winning director Marianne Elliott (*The Curious Incident of the Dog in the Night-Time* and *War Horse*). Part One: *Millennium Approaches* was first performed at the National Theatre in 1992 and was followed by Part Two: *Perestroika* the following year.



# Film



## Ministry of Light: Experimental State-Sponsored Films from India, 1968-1975

*Thurs, 9/21, 7:00-9:00 PM, free, approximately 95 minutes run time*

*Block Museum of Art, 40 Arts Circle Dr, Evanston*

*Contact: 847-491-4000, block-museum@northwestern.edu*

Can cinema make you a good citizen? For a half century, the Indian government hoped so; until 1994, they required commercial cinemas to screen twenty minutes of state-sponsored content before the feature presentation, forcing its movie-mad people to absorb information about the country's progress and development. In the 1960s, the organization that produced these shorts—Films Division—grew tired of dry documentaries and began to experiment. Its filmmakers played with form and used diverse modes such as animation, mixed-media, and even claymation, to present a more diverse and ambivalent vision of India to its people. The FD also funded films from India's new wave (sometimes known as Parallel Cinema), which exchanged big Bollywood fantasies for micro-scale neorealism. This series presents a selection of Films Division's sharpest verité and wildest avant-garde shorts, as well as Shyam Benegal's state-supported masterpiece of alternative cinema, *Nishant*.

- This Bit of That India (S.N.S. Sastry, 1975, 20 min.)
- I Am 20 (S.N.S. Sastry, 1967, 19 min.)
- Thoughts in a Museum (S. Sukhdev, 1968, 19 min.)
- And I Make Short Films (S.N.S. Sastry, 1968, 16 min.)
- And the Stars Look On (Omprakash Mehra, 1968, 12 min.)
- Yet in Him We Trust (S.N.S. Sastry, 1966, 1 min.)
- Explorer (Pramod Pati, 1968, 7 min.)
- Claxplosion (Pramod Pati, 1968, 2 min.)



## Nishant (1975)

*Fri, 9/22, 7:00 PM, free*

*Block Museum of Art, 40 Arts Circle Dr, Evanston*

*Contact: 847-491-4000, block-museum@northwestern.edu*

India's art house boom of the 1960s and 1970s owes much to the government: many "parallel" or new wave films were funded by the state-run Film Finance Corporation, whose mission was to promote art cinema. Shyam Benegal, one of the leading auteurs of this genre, found support from the FFC for his first two films, allowing him to establish his career. For the third film—*Nishant* (1975)—he faced red tape, and turned to an advertising agency for money to help complete his film. The result is his most incendiary work of social realism, fiercely critical of the feudal and patriarchal oppression that was still endemic in India. It features the great stars of Indian art cinema, including Shabana Azmi, Amrish Puri, Girish Karnad, and Naseeruddin Shah, in his first role.



# Leisure and Social

## Norris University Center Mini Courses

Expand your horizons with everything from dance to languages with Norris mini courses, all open to the public. Find more detailed class descriptions at [www.minicourses.com](http://www.minicourses.com)

- Early registration: August 21 – September 17
- Regular registration: September 18 – October 8
- Late registration: begins October 9

Register online at [www.nbo.northwestern.edu](http://www.nbo.northwestern.edu), by phone at 847-491-2305, or in person at the Norris Box Office, 1999 Campus Dr., Evanston. All registrants must be 15 years old, or 21 years old for classes with alcohol.

Arts/Crafts	Food and Drink	Music and Games	
Dance	Languages	Words and Images	
Digital Canvas	Mind and Body		

### Fall 2017 Course Schedule

*Classes are arranged by day of the week and then start time*

Class	Date and Time	Fee
<b>Mondays</b>		
Intermediate Guitar	10/16 – 11/20, 6:00-7:30 PM	\$91/101
Exploring Watercolor	10/9 – 11/13, 6:00-8:00 PM	\$111/121
Baking Fundamentals	10/9 – 11/13, 6:00-7:30 PM	\$111/121
Digital Video Editing	10/9 – 11/13, 6:00-7:30 PM	\$101/111
Intermediate Cherokee I	10/9 – 11/13, 7:00-8:30 PM	\$71/81
Nighttime Yoga	10/9 – 11/13, 7:00-8:00 PM	\$71/81
Intro to Guitar	10/16 – 11/20, 7:30-9:00 PM	\$81/101
<b>Tuesdays</b>		
Basics of Graphic Design	10/10 – 11/14, 5:00-6:00 PM	\$101/111
Introduction to Massage and Acupressure	10/10 – 11/14, 6:00-8:00 PM	\$71/81
Billiards: Pool School	10/10 – 11/14, 6:00-8:00 PM	\$71/81
Beginning Arabic	10/17 – 11/21, 6:00-7:30 PM	\$71/81

Beginning Spanish	10/10 – 11/14, 6:00-7:30 PM	\$71/81
Intro to B&W Darkroom	10/10 – 11/28, 6:00-9:00 PM	\$131/141
Sketchbook I	10/10 – 11/14, 6:00-8:00 PM	\$101/111
Latin Ballroom Dance	10/17 – 11/21, 6:00-7:30 PM	\$91/101
Intro to Digital Photography	10/10 – 11/14, 6:30-8:30 PM	\$101/111
Movement Mindfulness	10/17 – 11/21, 7:00-8:30 PM	\$71/81
Intermediate Spanish	10/10 – 11/14, 7:30-9:00 PM	\$71/81
Wine Appreciation A	10/17 – 11/21, 7:30-9:00 PM	\$111/121
Sketchbook II	10/10 – 11/14, 8:00-10:00 PM	\$101/111
<b>Wednesdays</b>		
Cake Decorating 101	10/11 – 11/15, 6:00-8:00 PM	\$111/121
English as a Second Language	10/11 – 11/15, 6:00-7:30 PM	\$71/81
<b>Thursdays</b>		
Acting and Character Creation	10/19 – 11/30, 6:00-7:30 PM	\$81/91
Beginning Knitting	10/12 – 11/16, 7:30-9:00 PM	\$101/111
Wine Appreciation B	10/12 – 11/9, 7:30-9:00 PM	\$111/121
Wine O'Clock	10/12 – 11/9, 9:15-10:10 PM	\$111/121
<b>Saturdays</b>		
Beginning Ceramics	10/14 – 11/18, 1:00-3:00 PM	\$101/111

### Mini Workshops

These one-day workshops are great to attend with friends to learn a new skill or walk away with some delicious recipes!

- Steamy Autumn Soups (Wed, 11/8, 5:30-7:00 PM, \$12)
- Theatre Tech 101 (Sun, 10/4, time TBD, \$12)
- Truffles (Wed, 11/15, 5:30-7:00 PM, \$12)



## Around Campus

### Cheap Lunch

Wednesdays, 12:00 PM – 1:30 PM, \$2 student/\$3 non-student

Sheil Catholic Center, 2110 Sheridan Rd., Evanston

Contact: Teresa Corcoran, [t-corcoran@northwestern.edu](mailto:t-corcoran@northwestern.edu), 847-328-4648

Join the fun for grilled hot dogs, brats, burgers, chips, soda, salad, and dessert for \$2 a student or \$3 for non-students.

### International Spouse Coffee and Conversation Hour

Mondays, 11:00 AM – 12:00 PM

E-Town Bistro at the Hilton Orrington Hotel, 1710 Orrington Avenue, Evanston

Contact: Cara Lawson, [c-lawson@northwestern.edu](mailto:c-lawson@northwestern.edu), 847-491-5613

International spouses of faculty, staff, postdocs, and students are invited to enjoy free coffee and conversation. Children are welcome.



### INVOForward Kickoff Event

Fri, 9/8, 12:00-5:00 PM

Wieboldt Hall South Entrance, Room 147, 340 E. Superior St, Chicago

Contact: Dimitra Georganopoulou, 847-467-3095,

[infoforward@northwestern.edu](mailto:infoforward@northwestern.edu)

INVOForward is a Northwestern mentorship program to accelerate biomedical commercialization, such as medical devices, therapeutics, and Health IT, on both Evanston and Chicago campuses. It is designed to increase entrepreneurship by helping potential or current biomedical entrepreneurship teams focus on the customer discovery process. Teams may consist of 1-3 people, with at least one NU or NM faculty, physician, clinical resident/fellow, staff or graduate student. Our first INVOForward cohort will kick-off this fall with a focus on medical devices. We invite anyone with an interest in entrepreneurship to join us at our Kickoff Event!

### Innovations Lab Open House

Thurs, 9/14, 12:30-2:30 PM, free

McGaw Pavilion, LL-0540, 240 E. Huron, Chicago, free

Contact: Ellie O'Brien, 312-503-4045, [ellie.obrien@northwestern.edu](mailto:ellie.obrien@northwestern.edu)

Stop by Northwestern Simulation's Innovations Lab to learn about our capabilities in designing and developing new projects for medical education and research through modeling, prototyping and production. We would love to meet with you and hear your idea!

### Walk to End Alzheimer's: Cognitive Neurology and Alzheimer's Disease Center (CNADC) Team

Sun, 9/24, 8:00 AM-12:00 PM

Montrose Ave and Simonds Dr, Chicago

Join the CNADC team for the Alzheimer's Association's Walk to End Alzheimer's in a three mile walk.

### Chicago Half Marathon & 5K: 6<sup>th</sup> Annual Global Health Initiative Fund Team Run

Sun, 9/24, 7:00 AM-12:00 PM

Jackson Park, 6300 South Cornell Ave, Chicago

Contact: Liz Wayne, [liz.wayne@northwestern.edu](mailto:liz.wayne@northwestern.edu)

Support global health education and research programs at Northwestern University Feinberg School of Medicine by running in the Chicago Half Marathon or Life Time 5K. [Register online](#) using the code "CT17GHIF"

### 5<sup>th</sup> Annual EECS Bonfire Welcome Party

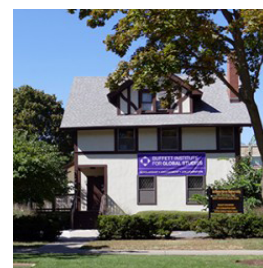
Mon, 9/25, 6:00-8:00 PM

Tech Lakefill Fire Pit, 2145 Sheridan Rd, Evanston

Contact: Lana Kiperman,

[lane@ece.northwestern.edu](mailto:lane@ece.northwestern.edu), 847-467-0028

Join us for the 6<sup>th</sup> annual Electrical Engineering and Computer Science bonfire welcome party, presented by Graduates of EECS group. Have fun greeting old friends and meet new faces alike! The menu includes s'mores, hot dogs, baked potatoes, and other goodies.



### Buffett Institute Open House

Tues, 9/26, 4:00-6:00 PM

Buffett Institute, 1902 Sheridan Rd, Evanston

Contact: Iszy Licht, 847-467-2770,

[iszy.licht@northwestern.edu](mailto:iszy.licht@northwestern.edu)

Help us kick off another year of global engagement and research at Northwestern! We invite our faculty and student affiliates, visiting scholars, global engagement alumni, and friends of the Buffett Institute to our annual open house and beginning of the year reception.

### Gender and Sexuality Studies Program Fall Reception

Thurs, 10/5, 5:00-7:30 PM

Farmhouse Evanston, Beacon Room, 703 Church Street, Evanston

Contact: Jasmine E. Tucker, 847-491-5871, [gender@northwestern.edu](mailto:gender@northwestern.edu)

Join the Gender and Sexuality Studies Program for our annual Fall Reception at Farmhouse Evanston!



### **Dearborn Observatory Public Viewing**

*Fridays, 9:00 - 11:00 PM Free*

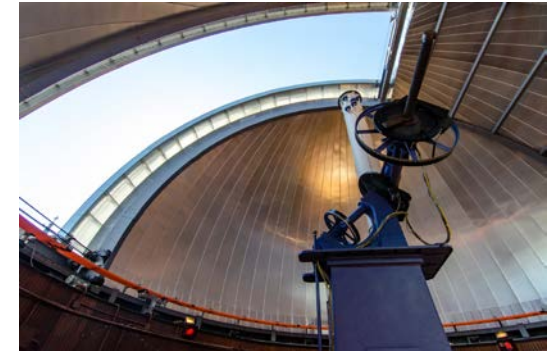
*Dearborn Observatory, 2131 Tech Drive, Evanston*

*Contact: Yassaman Shemirani 847-491-7650,*

*yassaman.shemirani@northwestern.edu*

The Dearborn Observatory is open for public viewing every Friday night from 9 to 11 PM during the spring and summer months (Apr-Sept). The sessions are free and open to all. Reservations are required for the first hour but walk-ins are welcome in the second hour. All visitors should note that the dome is neither heated nor air-conditioned so please dress appropriately. Friday evening sessions are held "rain or shine."

Unfortunately, the Dearborn is not ADA-accessible. Several staircases must be climbed in order to reach the telescope. For more information go to <http://www.physics.northwestern.edu/observatory/>. To make a reservation go to <http://sites.northwestern.edu/dearborn/>.



### **CIERA Astronomer Evenings**

*Fri, 9/29, 9:00-11:00 PM, free*

*Dearborn Observatory, 2131 Tech Drive, Evanston*

*Contact: Gretchen Oehlschlager, CIERA-Events@northwestern.edu*

After looking through the historic telescope, meet and talk with astronomers from CIERA, Northwestern's Center for Interdisciplinary Exploration and Research in Astrophysics! Each month they focus on a different astronomy topic related to their research & they are available to answer your questions. This is a special program provided on the final Friday of each month, as part of the weekly Dearborn Observatory public viewing sessions.



### ARTica



The Norris University Center's craft shop offers the materials to make buttons, bind books, laminate, screen print, sew, and space to work on art projects. Quarterly ceramics memberships including access to studios and 25 pounds of clay, are available for \$55 for Northwestern students and \$105 for the public. Visit [www.artica.northwestern.edu](http://www.artica.northwestern.edu) for more details.

### Norris Outdoors



Norris University Center offers a wide range of equipment available to rent for your outdoor adventures including:

- camping equipment (tents, backpacks, etc.)
- grills and stoves sports gear (Frisbees, volleyball and net, etc.)

Visit Norris Outdoors for package deals and a full list of equipment. The office is open Monday to Friday, 12:30 – 5:00 PM, or at 847-491-2345. They can also be found at [www.northwestern.edu/norris/arts-and-recreation/norrisoutdoors](http://www.northwestern.edu/norris/arts-and-recreation/norrisoutdoors) or on Facebook and Twitter. Items must be requested at least 5 days in advance.

### Northwestern Music Academy [Learn more online](#)



**Other Courses**  
(offered throughout the school year)

#### [Piano and Organ](#)

The Music Academy Piano Division offers pre-piano class, which serves as an introduction to more formal piano instruction: keyboard instruction in two tracks for students ages 6 to 18, and instruction for adults. Pre-piano serves as an introduction to more formal piano instruction. Keyboard instruction for children begins with pre-staff music and expands to landmark-based intervallic reading. After the first year of study, most children participate in the Illinois State Music Teacher's Association curriculum assessment, where they demonstrate skills and receive certificates and pins for participation.

#### [Strings](#)

The String Division offers private lessons in violin, viola, and cello, with goals of both providing musical instruction and instilling a love of music and of learning music. The division believes that all children can learn to their potential when placed in an environment that includes clear instruction, an involved parent, and regular opportunities to listen to and perform.

#### [Voice](#) (adults)

Adult voice classes concentrate on basic vocal technique including registers, breathing, range, and diction. Unique teaching methods and small class size (4 to 5 students) produce good results after a short period of time. The class is recommended not only for people interested in singing, but also for adults who would like to improve their speaking voice. Private voice lessons also available.

# Religious Services

Northwestern is proud to have a vibrant community embracing diverse religious beliefs. We have regular services on campus as well as events for religious observances. For general inquiries, contact the Office of Religious and Spiritual Life at 847-491-7256 located at 1870 Sheridan Rd. on our Evanston campus.

## Christian – Protestant

Christian worship in a broad Protestant tradition is held most Sundays of the academic year at 11:00 AM – 12:00 PM at the Alice Millar Chapel, 1870 Sheridan Rd.

## Christian – Catholic

Daily Mass is celebrated Mondays to Fridays at 5:00 – 5:30 PM, On Sundays, Masses are held at 9:30 – 10:30 AM, 11:00 AM – 12:00 PM, 5:00 – 6:00 PM, and 9:00 – 10:00 PM, Services are at the Sheil Catholic Center Chapel, 2110 Sheridan Rd. Sheil also offers other sacraments, prayers, fellowship, and retreats. Visit <http://www.sheil.northwestern.edu/> for a complete list of events.

## Jewish

The Fiedler Hillel leads Reform and Conservative Shabbat services every Friday evening from 6:00 – 7:00 PM, followed by a free dinner, at 629 Foster Street. Orthodox services are held at the same place on Saturday mornings from 9:30 – 10:30 AM. A full list of events is at [www.northwesternhillel.org](http://www.northwesternhillel.org)

**Northwestern  
Hillel**

## Muslim

Jumah, Muslim prayers on Fridays, are held every Friday from 1:10 – 2:00 PM, On the Evanston campus, Jumah is at Parkes Hall, 1870 Sheridan Rd., Room 122. In Chicago, it is at the Lurie Building, 303 E. Superior, in the Grey Seminar Room.

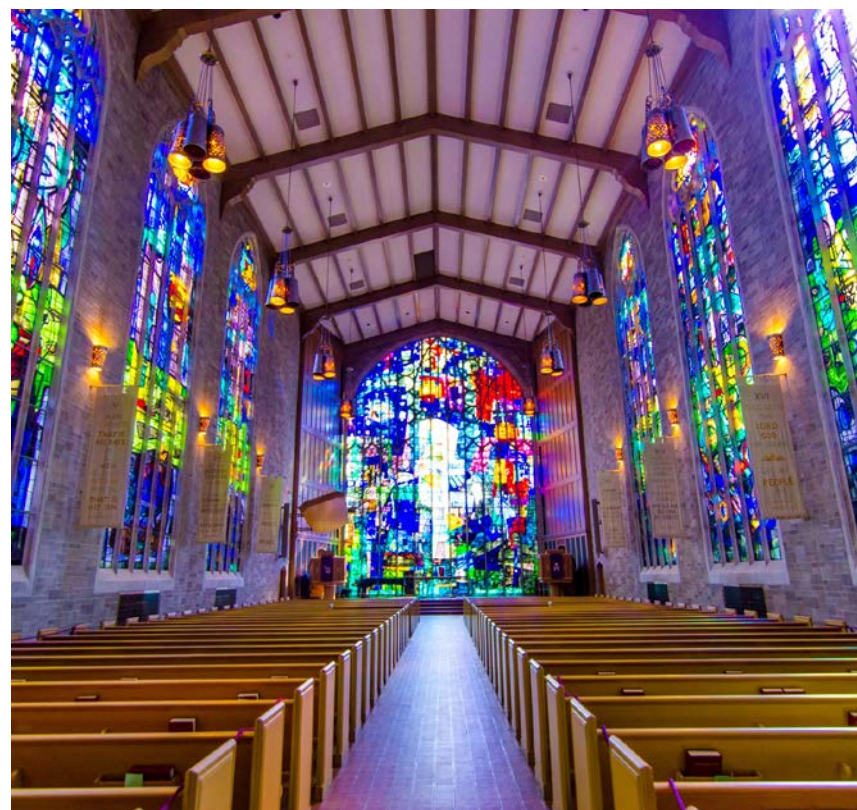
Contact: Jill Norton, [jill-brazel@northwestern.edu](mailto:jill-brazel@northwestern.edu)

## Spirituality

Northwestern also offers opportunities for the community to engage in interfaith fellowship or spiritual exploration.

## Observances

- **Eid al Adha** (Sat 9/2): Islamic holiday commemorating the Prophet Abraham's willingness to sacrifice to Allah
- **Rosh Hashanah** (Wed 9/20): the Jewish New Year
- **Navaratri** (Thurs 9/21): Hindu multi-day festival symbolizing the triumph of good over evil
- **Dussehra** (Sat 9/30): Hindu holiday celebrating the victory of good over evil, celebrated at the end of Navratri
- **Yom Kippur** (Sat 9/30): Jewish day of atonement





# Northwestern Wildcat Athletics

The Northwestern Wildcats are Chicago's Big Ten team. Come cheer on the Wildcats at home or on the road.

Sports in season this fall are:

- cross country – women's
- field hockey – women's
- football – men's
- soccer – men's
- soccer – women's
- volleyball – women's

There are two easy ways to purchase tickets, listed below. Tickets are typically mailed two to three weeks prior to a home event unless the will call delivery method is selected.

- Online at [www.nusports.com](http://www.nusports.com)
- Calling or visiting the ticket office at 888-467-8775, Monday to Fridays from 9:00 AM – 5:00 PM

You can also email the office at [cat-tix@northwestern.edu](mailto:cat-tix@northwestern.edu) and follow them on Twitter using the handle @NU\_Tickets.



## **Cross Country**

Join the Wildcats as they match up with the top collegiate runners in a series of meets during the fall.

Date and Time	Game
9/2, TBD	UIC Flames Opener, Chicago, IL
9/30, 8 AM	Cowboy Jamboree, Stillwater, OK
10/14, TBD	NCAA Pre-Nationals, Louisville, KY
10/29, 10 AM	Big Ten Championships, Bloomington, IN
11/10, TBD	NCAA Regionals, Ames, IA
11/18, TBD	NCAA Championships, Louisville, KY

## **Field Hockey**

Tickets are typically \$7 for adults, \$3 per person for groups of 15 or more, and \$5 for youth. Home games are at the Lanny and Sharon Martin Stadium, 2235 Campus Drive, Evanston.



Date and Time	Game
9/1, 3 PM	Boston College @ Lancaster, PA
9/3, 10 AM	Duke @ Lancaster, PA
9/8, 1 PM	Temple
9/10, 12:30 PM	Kent State
9/15, 3 PM	Ohio State
9/19, 3 PM	Louisville
9/22, 4 PM	@ Penn State
9/24, 12 PM	@ Maryland
9/29, 3 PM	Rutgers
10/6, 3 PM	Indiana
10/8, 11 AM	@ Ball State
10/13, 3 PM	@ Iowa
10/15, 11 AM	UMass
10/20, TBA	# Michigan
10/22, 12 PM	Michigan State

### Field Hockey Promotions

#### **Northwestern vs. Temple**

**Fri, 9/8, 1:00 PM**

- **Opening Day at Lakeside Field:** Get the season underway with the 'Cats. Pick up a 2017 schedule poster and schedule card FREE for all fans.



#### **Northwestern vs. Kent State**

**Sun, 9/10, 1:00 PM**

- **Heroes Giveaway:** Early arriving fans will receive a special t-shirt in honor of Patriot's Day.



#### **Northwestern vs. Ohio State**

**Fri, 9/15, 3:00 PM**

- **Student Promotion:** The 'Cats welcome new Wildcats to Evanston! Be sure to stop by Lakeside Field following Purple Pride to cheer on the 'Cats as they take on the Buckeyes. Early arriving students will receive a free ice cream!



#### **Northwestern vs. Louisville**

**Tues, 9/19, 3:00 PM**

- **Welcome Back, 'Cats:** Happy first day of class! Stop by Lakeside Field for a tasty snack between your classes.



#### **Northwestern vs. Rutgers**

**Fri, 9/29, 3:00 PM**

- **National Coffee Day:** Celebrate National Coffee Day with the 'Cats!



#### **Northwestern vs. Indiana**

**Fri, 10/6, 3:00 PM**

- **Bring a Buddy Day at Lakeside Field:** Bring a pal to the game, and you will both receive a Northwestern fidget spinner.



#### **Northwestern vs. UMass**

**Sun, 10/15, 11:00 AM**

- **World Students Day:** Celebrate World Students Day with multicultural groups and activities.



#### **Northwestern vs. Michigan State**

**Sun, 10/22, 12:00 PM**

- **Senior Day:** Help us celebrate our seniors at their final home regular season game at Lakeside Field.





## Football

Home games are at Ryan Field, and the arena opens three hours before kick-off. Please go online at [www.nusports.com](http://www.nusports.com) or call the ticket office at 888-467-8775 to ask about tickets.



Wildcats fans can purchase single-game tickets to Northwestern's seven regular-season contests immediately on Tuesday by calling 888-GO-PURPLE (888-467-8775) or at [NUSports.com](http://NUSports.com). Season tickets, the only way to guarantee the best seats at Ryan Field, are currently on sale here.

Groups of 15 or more can buy group tickets.

Date and Time	Game
9/2, 2:30 PM	Nevada
9/9, 11 AM	@ Duke
9/16, 6:30 PM	Bowling Green
9/30, TBD	@ Wisconsin
10/7, 11 AM	Penn State (Homecoming)
10/14, TBD	@ Maryland
10/21, TBD	Iowa
10/28, TBD	Michigan State
11/4, TBD	@ Nebraska
11/11, TBD	Purdue (Family Weekend)
11/18, TBD	Minnesota
11/25, TBD	@ Illinois



## Football Promotions

### Northwestern vs. Nevada

Sat, 9/2, 2:30 PM



- **High School Band Day:** All fans are invited to Ryan Field for the 2017 Home Opener when the 'Cats host Nevada. Fans in attendance will receive a special halftime show performed by the Northwestern University Marching Band and over 1,500 members of area high school marching bands.
- **Dance Day:** All area dance teams are invited to Ryan Field to show off their skills before cheering on the 'Cats! Teams that register in advance will perform at the Wildcat Alley fan fest before the home football game on September 2. For more information and to register click here.
- **Willie's Kids' Club Day:** All members of the 2017-18 Willie's Kids Club receive a game ticket for this matchup and access to an exclusive event. For more information on how your child can take part, email [wildcatmarketing@northwestern.edu](mailto:wildcatmarketing@northwestern.edu).

### Northwestern vs. Bowling Green (Evanston Day)

Sat, 9/16, 6:30 PM – Gameday Sponsor: AT&T



- **Chicagoland Boy Scout/Girl Scout Days:** All area Chicago area scouts, along with their friends and families are invited out to cheer on the 'Cats. All scout groups that register in advance will receive a scoreboard message, access to discount tickets, a special commemorative patch and Northwestern hat. Groups interested in taking advantage of this promotion should email [wildcatmarketing@northwestern.edu](mailto:wildcatmarketing@northwestern.edu).
- **Cheer Day:** All area cheerleading squads are invited to Ryan Field to show off their skills before cheering on the 'Cats! Teams that register in advance will perform in a group performance at halftime of the football game on September 16. For more information and to register click here.
- **Martial Arts Day:** All area martial arts teams are invited to Ryan Field to show off their skills before cheering on the 'Cats! Teams that register in advance will perform at the Wildcat Alley fan fest before the home football game on September 16. For more information and to register click here.
- **Hall of Fame Night:** Join Northwestern in recognizing the six members of its Athletic Hall of Fame Class of 2017. For more information, click here.

#### Northwestern vs. Penn State (Homecoming)

Sat, 10/7, 11:00 AM – Gameday Sponsor:  
Northwestern Medicine



- **Homecoming:** The annual fall tradition of Homecoming returns to Ryan Field once again this season when the 'Cats host Penn State. Fans are invited back to Northwestern to see the naming of the homecoming court as well as the crowning of the 2017 Homecoming King and Queen. For complete 2017 Homecoming information, [click here](#).
- **Eckrich \$1 Million Challenge:** College football is here and we're giving you the chance to throw for \$1 million on the Road to the national championship. Once you complete your registration, you'll automatically be entered into the 2018 national championship game, as well as additional game drawings based on your location. Invite friends to sign up, play Kirk's QB Challenge, and make sure to come back each day to earn additional entries. For more information please visit [www.eckrichfootball.com](http://www.eckrichfootball.com).

#### Northwestern vs. Iowa

Sat, 10/21, TBA – Gameday Sponsor: BMO Harris Bank



- No promotions at this time.

#### Northwestern vs. Michigan State

Sat, 10/28, TBA – Gameday Sponsor: Athletico



- **Chicagoland Boy Scout/Girl Scout Days:** All area Chicago area scouts, along with their friends and families are invited out to cheer on the 'Cats. All scout groups that register in advance will receive a scoreboard message, access to discount tickets, a special commemorative patch and Northwestern hat. Groups interested in taking advantage of this promotion should email [wildcatmarketing@northwestern.edu](mailto:wildcatmarketing@northwestern.edu).
- **Youth Football Day:** All area youth football teams are invited to along with their friends and families are invited out to cheer on the 'Cats. All scout groups that register in advance will receive a scoreboard message and access to discount tickets. For more information [click here](#).
- **Advanced Disposal:** Join Northwestern in a friendly national college competition promoting waste reduction at their football games. During the challenge, Northwestern will highlight their efforts to implement waste reduction programs.

#### Northwestern vs. Purdue

Sat, 11/11, TBA



- **Salute to Heroes:** To recognize the tremendous efforts of Chicagoland's finest and bravest, all local veterans, police officers and firefighters, as well as their friends and family, are invited to experience Northwestern Football and have the opportunity to participate in an on-field flag presentation before kickoff. For more information email [wildcatmarketing@northwestern.edu](mailto:wildcatmarketing@northwestern.edu)
- **Family Weekend:** Family members of Northwestern students are invited to Evanston to experience the spirit that embraces our campus. This weekend provides a snapshot of the campus culture, the community's academic excellence and the energy that moves from the seats of Ryan Field down through the Arch. For more information on this great weekend, [click here](#).

#### Northwestern vs. Minnesota

Sat, 11/18, TBA



- **Senior Day:** Join us as the Northwestern Football Class of 2017 play their final home game at Ryan Field against Minnesota. Be sure to be in the stands early for a special pregame ceremony.





## Soccer – Men's



Tickets are typically \$7 for adults, \$3 per person for groups of 15 or more, and \$5 for youth. Home games are at the Lanny and Sharon Martin Stadium, 2235 Campus Drive, Evanston.



Date and Time	Game
9/1, 4 PM	@ Colgate
9/3, 6 PM	@ Syracuse
9/8, 7 PM	Ohio State
9/13, 8 PM	@ Wisconsin
9/17, 3:30 PM	Indiana
9/20, 7 PM	UIC
9/24, 12 PM	@ Michigan
9/29, 6 PM	@ Maryland
10/3, 6 PM	@ Notre Dame
10/6, 7 PM	Alumni Game
10/9, 2 PM	Western Illinois
10/11, 3 PM	@ DePaul
10/16, 12 PM	Rutgers
10/20, 7:30 PM	Michigan
10/24, 4 PM	Loyola
10/29, 11 AM	@ Penn State

### Men's Soccer Promotions

#### Northwestern vs. Ohio State

Fri, 9/8, 7:00 PM

- **Heroes Day:** All military personnel, first responders, and their families receive FREE tickets to the game. RSVP to wilcatmarketing@northwestern.edu to participate in the National Anthem and starting lineup pregame.
- **Camper Reunion Day:** NU Soccer campers are invited to Martin Stadium to cheer on the 'Cats. Tickets are only \$3 for campers!



#### Northwestern vs. Indiana

Sun, 9/17, 3:30 PM

- **New Student Convocation:** All incoming Northwestern Freshmen are invited to cheer on the 'Cats as they take on the Indiana Hoosiers in a crucial Big Ten match!
- **Football Ticket Stub:** Show your ticket stub from the Northwestern football game against Bowling Green on September 16 and receive \$3 admission!



#### Northwestern vs. UIC

Wed, 9/20, 7:00 PM

- **Hispanic Heritage Night:** Northwestern Men's Soccer celebrate Hispanic Heritage Night when they welcome the UIC Flames to Martin Stadium in this Midweek Matchup.
- **Student Scarf Giveaway:** The first 150 Northwestern students receive a free Northwestern Soccer scarf!



#### Northwestern vs. Western Illinois

Mon, 10/9, 2:00 PM

- **Youth Day:** Northwestern Soccer invites all students, staff, and family from the greater Chicagoland area to celebrate Columbus Day with \$3 tickets to the game!



#### Northwestern vs. Rutgers

Sun, 10/15, 12:00 PM

- **Sunday Futbol:** Wear your favorite jersey to the game and celebrate Sunday Futbol with special giveaways, halftime promotions, and score updates around the NFL during the game!
- **Doubleheader Day:** It's doubleheader day at Martin Stadium. One ticket is good for the men's game against Rutgers at 12:00pm and the women's game against Wisconsin at 3:00pm!



#### Northwestern vs. Michigan State

Fri, 10/20, 7:30 PM

- **Senior Night:** Come cheer on the 'Cats as we celebrate the Senior Class prior to the match!
- **Doubleheader Day:** It's doubleheader day at Martin Stadium. One ticket is good for the women's game against Nebraska at 5:00pm and the men's game against Michigan State!



#### Northwestern vs. Loyola

Tues, 10/24, 4:00 PM

- **Fan Appreciation Day**



## Soccer – Women's

Tickets are typically \$7 for adults, \$3 per person for groups of 15 or more, and \$5 for youth. Home games are at the Lanny and Sharon Martin Stadium, 2235 Campus Drive, Evanston.



Date and Time	Game
9/3, 1 PM	Cincinnati
9/7, 7 PM	Missouri
9/10, 1 PM	Pepperdine
9/14, 6 PM	@ Penn State
9/17, 12 PM	@ Ohio State
9/22, 7 PM	Rutgers
9/24, 1 PM	Maryland
9/28, 7 PM	@ Indiana
10/1, 12 PM	@ Purdue
10/7, 7 PM	@ Illinois
10/12, 8 PM	Minnesota
10/15, 3:30 PM	Wisconsin
10/20, 5 PM	Nebraska
10/25, 6 PM	@ Michigan State

### Women's Soccer Promotions

#### Northwestern vs. Cincinnati

Sun, 9/3, 1:00 PM

- **Football Ticket Stub Special:** Show your ticket stub from the football game on September 2 vs. Nevada and receive \$3 admission to the match!



#### Northwestern vs. Missouri

Thurs, 9/7, 7:00 PM

- **Minute of the Match:** Guess when the 'Cats score their first goal of the game. The fan with the closest guess wins a Northwestern prize pack!



#### Northwestern vs. Pepperdine

Sun, 9/10, 1:00 PM

- **Youth Soccer Day:** All youth soccer players wearing their club team jersey to the game receive \$3 admission for them and their families!



#### Northwestern vs. Rutgers

Fri, 9/22, 7:00 PM

- **Student Scarf Giveaway:** The first 150 students in attendance will receive a free NU Soccer scarf. Show your scarf at the remaining home games for some special giveaways!



#### Northwestern vs. Maryland

Sun, 9/24, 1:00 PM

- **Willie's Kids' Club Day:** Members of the Willie's Kids' Club are invited to join the Wildcats in the pregame high five tunnel and be on the field at halftime.
- **Score on Willie:** Following the match, all kids 8th grade and under are invited onto the field to take a penalty kick on Willie the Wildcat!



#### Northwestern vs. Minnesota

Thurs, 10/12, 8:00 PM

- **Minute of the Match:** Guess when the 'Cats score their first goal of the game. The fan with the closest guess wins a Northwestern prize pack!



#### Northwestern vs. Wisconsin

Sun, 10/15, 3:30 PM

- **Senior Day:** Help us celebrate our Senior Class with a special pregame ceremony.
- **Doubleheader Day:** It's doubleheader day at Martin Stadium. One ticket is good for the men's match versus Rutgers at 12:00pm and the women's match versus Wisconsin.
- **Sunday Futbol:** Wear your favorite team's NFL jersey to the game to receive \$3 admission!



#### Northwestern vs. Nebraska

Fri, 10/20, 5:00 PM

- **Doubleheader Day:** It's doubleheader day at Martin Stadium. One ticket is good for the women's game against Nebraska and the men's game against Michigan State!
- **Fan Appreciation Day**





### Volleyball – Women's

Tickets are typically \$7 for adults, \$3 per person for groups of 15 or more, and \$5 for youth. Home games this year will be held at Evanston Township High School while renovations take place at the Welsh-Ryan Arena.



Date and Time	Game
9/1, 11 AM	South Carolina @ Durham, NC
9/1, 6 PM	Duke @ Durham, NC
9/2, 11 AM	North Carolina Wilmington @ Durham
9/8, 4:30 PM	Milwaukee @ Chicago, IL
9/9, 12 PM	Army @ Chicago, IL
9/9, 7:30 PM	DePaul @ Chicago, IL
9/15, 2:30 PM	Seton Hall @ Richmond, VA
9/16, 9:30 AM	Bowling Green @ Richmond, VA
9/16, 6 PM	VCU @ Richmond, VA
9/20, 6 PM	@ Purdue
9/23, 7 PM	Illinois
9/29, 6 PM	@ Rutgers
9/30, 6 PM	@ Penn State
10/6, 7 PM	Indiana
10/8, 1 PM	Purdue
10/13, 7 PM	Maryland
10/14, 7 PM	Ohio State
10/20, 7 PM	@ Nebraska
10/21, 7 PM	@ Iowa
10/25, 7 PM	Rutgers
10/28, 7 PM	@ Wisconsin
11/1, 7 PM	@ Illinois
11/4, 7 PM	Michigan State
11/10, 6 PM	@ Michigan
11/11, 6 PM	@ Michigan State
11/17, 7 PM	Minnesota
11/19, 1 PM	Wisconsin
11/12, 7 PM	Nebraska
11/24, 6 PM	@ Maryland



# Recreation

Northwestern Recreation offers opportunities to discover and maintain a healthy lifestyle to members of our community through a diverse array of recreational activities. A full list of activities can be found online at [www.nurecreation.com](http://www.nurecreation.com). For general questions, call 847-491-4300.

## Facilities

Membership to Northwestern Recreation offers access to a well-equipped facility with knowledgeable staff to assist you.

In addition to the highlighted offerings in this guide, the 95,000 square foot Henry Crown Sports Pavilion, Norris Aquatics Center, and Combe Tennis Center have space and amenities for all types of exercise, including: space to play team sports like basketball courts, group exercise, cardiovascular equipment, strength and weight-training equipment, an Olympic-sized pool, and a wellness suite for fitness assessments and massage.

On top of the benefits from membership to Northwestern Recreation, there are even more ways to be healthy. Additional fees apply for personal training, private courses, massage, and the pro shop.

## Location and Hours

The Henry Crown Sports Pavilion, which links to other facilities in Northwestern Recreation, is at 2311 Campus Drive, Evanston. Ample parking is available at the North Campus Parking Garage.

Hours for Henry Crown Sports Pavilion (hours during academic breaks differ, and hours for the pool and other areas vary):

Monday – Thursday	6:00 AM – 11:00 PM
Friday	6:00 AM – 10:00 PM
Saturday	8:00 AM – 9:00 PM
Sunday	8:00 AM – 10:00 PM

## Membership

Community members, Northwestern employees, and university alumni are invited to join. There is a one-time registration fee per household of \$100.

Type	Annual	Monthly	Day passes before 3 pm	Day passes after 3 pm and weekends
Individual	\$480	\$46	\$12	\$18
Spouse	\$480	\$46	\$12	\$18
Child (each)	\$240	\$26	\$9 \$0 (under 6)	\$16 \$0 (under 6)

Rates for Northwestern faculty, staff, and their families:

Type	Annual	Monthly	Day passes before 3 pm	Day passes after 3 pm and weekends
Employee	\$384	\$38	\$9	\$16
Employee spouse	\$384	\$38	\$9	\$16
Employee child	\$240	\$26	\$9 \$0 (under 6)	\$16 \$0 (under 6)

Join Northwestern Recreation online at [www.nurecreation.com/membership](http://www.nurecreation.com/membership), by calling the membership office at 847-491-4303 in person. Children 15 years old and under must be accompanied by a parent, and the child rate only applies if the parent is also a member. Complimentary trial memberships for one week are available upon request. Payment is accepted by cash, check, or credit card.

## Intramurals

The intramural sports program strives to offer students, staff, and faculty opportunities to have fun. Over 2,000 unique participants and 25% student involvement every year makes the program enjoyable and while competitive. Fall intramurals are dodgeball, flag football, and volleyball. Winter has basketball and floor hockey. In the spring, there is soccer, softball, and ultimate Frisbee.

## Tennis

- *Junior and Adult Lessons* – Throughout the year, group lessons are offered for all ages and skill levels. Private lessons for 1-2 people are also available.
- *USTA Teams* – Northwestern hosts 8 USTA league teams. They participate in weekly evening practice and compete in weekend matches against other clubs.
- *Open Court* – Reserve indoor courts for up to 1.5 hours any day of the week starting from 6:30 AM Monday to Friday or 8:00 AM on the weekends by calling 847-491-4312. Play time for indoor courts is unlimited as long as there is no one waiting to play. Outdoor courts are first-come-first-served.



# One Book, One Northwestern

A full program of events will kick off in September for our new One Book One Northwestern selection, *Our Declaration*. For more information about the One Book One Northwestern program, please contact Nancy Cunniff at [onebook@northwestern.edu](mailto:onebook@northwestern.edu) or 847-467-2294.

## ***Our Declaration* by Danielle Allen Selected for One Book Program 2017-2018**

"Our Declaration: A Reading of the Declaration of Independence in Defense of Equality," a book that brings an eye-opening perspective to one of the most studied texts in U.S. history, is Northwestern University's One Book One Northwestern all-campus read for the 2017-18 academic year.

The author of "Our Declaration," Danielle Allen, will deliver a keynote address and sign books Oct. 19 at Northwestern. All first-year students receive a copy of the One Book each year.

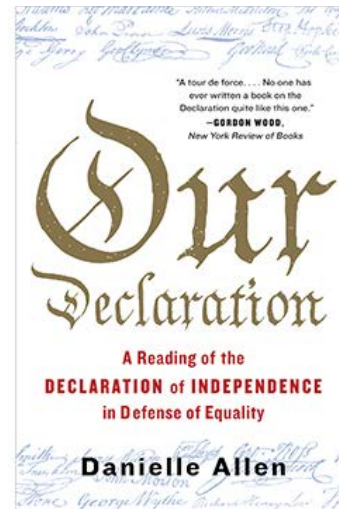
Allen, the director of the Edmond J. Safra Center for Ethics at Harvard University, offers readers an intimate look at experiences that inspired the book when she was teaching in the 2000s on the South Side of Chicago.

At the time, she was a political science and classics professor at the University of Chicago by day, and by night she taught adults in the Odyssey Project, a program of the Illinois Humanities Council to help low-income adults, commonly unemployed or underemployed, reenter the educational system.

In the process, Allen experienced a "personal metamorphosis," rediscovering the Declaration and its central tenets: equality and freedom. The book makes the argument that liberty and equality are interdependent rather than in contest.

Too many Americans buy into the idea that true equality can only be achieved at the expense of our individual freedoms, she argues. As a result, equality has taken a back seat to liberty at the expense of our democracy.

"If we abandon equality, we lose the single bond that makes us a community, that makes us a people with the capacity to be free collectively and individually in the first place," she wrote.



## **Essay Contest**

*Due Sept 10*

One Book One Northwestern is awarding a \$500 prize for the best essay of In less than 1,337 words—the length of the Declaration of Independence or less by an entering first-year or transfer student on the question of equality. See [online](#) for more details.

## **Danielle Allen Keynote Address**

*Thurs, 10/19, 4:30 PM, free and no tickets required*

*Tech, Ryan Family Auditorium, 2145 Sheridan Road*

*Contact: Nancy Cunniff, 847-467-2294, [onebook@northwestern.edu](mailto:onebook@northwestern.edu)*

Danielle Allen, director of the Edmond J. Safra Center for Ethics at Harvard University, and author of *Our Declaration: A Reading of the Declaration of Independence in Defense of Equality*, will visit the Northwestern Evanston campus to deliver a keynote address and sign books.

## Academic Lectures

### Global Reproductive Health from Below: From Formal “Magic Bullets” to Informal Volunteer Practice (Noelle Sullivan, Northwestern)

Fri, 9/1, 8:00-9:00 AM

Prentice Women's Hospital, Canning Auditorium, 3<sup>rd</sup> Floor, 250 E. Superior, Chicago

Contact: Global Health, 847-467-0750, [globalhealth@northwestern.edu](mailto:globalhealth@northwestern.edu)

The Department of Obstetrics and Gynecology at the Feinberg School of Medicine of Northwestern, in partnership with the Program in Global Health Studies, presents the 2017 Summer Global Women's Health Lecture Series.

Noelle Sullivan, Ph.D. is a medical anthropologist who has been conducting qualitative research in health facilities in Tanzania since 2005. Her longitudinal project examines what becomes 'in vogue' in global health at the transnational and national stage, what programs and activities arise from those donor and state priorities, and what those interventions mean to the health facilities where they are carried out.



### **Center for Catalysis and Surface Science (CCSS) and the Institute for Sustainability and Energy at Northwestern (ISEN) present:**

#### Symposium Commemorating the 150<sup>th</sup> Birthday of Vladimir Ipatieff

Thurs, 9/7, 9:00 AM-5:00 PM

Pancoe-NSUHS Life Sciences Pavilion, Auditorium, 2200 Campus Drive

Contact: Jeff Henderson, 847-467-1972, [jeffhenderson@northwestern.edu](mailto:jeffhenderson@northwestern.edu)

Northwestern is excited to welcome you to our symposium honoring and commemorating the 150th birthday of Vladimir Nikolayevich Ipatieff, whose rich 80-year history of catalytic research at the university includes the founding of the high pressure catalysis laboratory at Northwestern that led to the establishment of CCSS as an official University Research Center in 1985.

### Policy Uncertainty, Stock Liquidity, and Disclosure (Jordan Schoenfeld, University of Utah)

#### **Accounting Information and Management Department Brown Bag Series**

Thurs, 9/7, 12:15-1:15 PM, free

Kellogg Global Hub, Room 4302, 2211 Campus Drive, Evanston

### Frontiers in Nanotechnology Seminar (Alex Miller, UNC Chapel Hill)

Thurs, 9/7, 4:00-5:00 PM

Tec LR5, 2145 Sheridan Rd, Evanston

Contact: Leah Seiffert, 847-491-4573, [l-seiffert@northwestern.edu](mailto:l-seiffert@northwestern.edu)

The International Institute for Nanotechnology is hosting Professor Alex Miller, University of North Carolina at Chapel Hill, as part of the IIN Frontiers in Nanotechnology Seminar Series. Hosted by Professor Danna Freedman.



### Novel Neural Messengers (Solomon H. Snyder, Johns Hopkins)

#### **The 4<sup>th</sup> Annual Narahashi Lecture**

Mon, 9/11, 4:00-5:00 PM

Lurie Medical Research Center, Hughes Auditorium, 303 E. Superior

Contact: Alexa Nash, 312-503,4893, [alexa.nash@northwestern.edu](mailto:alexa.nash@northwestern.edu)

Criteria for what constitutes a neurotransmitter had traditionally been rigid, requiring existence of the substance in nerve terminals, release by depolarization, actions on a postsynaptic membrane protein receptor and whatever other criteria suited the critic's fancy. In recent decades, decidedly atypical substances have emerged as messenger molecules, notably gases such as nitric oxide, carbon monoxide and hydrogen sulfide as well as D-amino acids. The lecture will highlight this diversity, focusing in particular on novel insights regarding hydrogen sulfide with clinical ramifications in Huntington Disease.

Dr. Solomon H. Snyder is a distinguished service professor of neuroscience, pharmacology, and psychiatry at the Johns Hopkins School of Medicine and founder of the Solomon H. Snyder Department of Neuroscience. He is world-renowned for his pioneering research in the identification of receptors for neurotransmitters and drugs and the elucidation of the actions of psychotropic agents.



### **The Anthem-Cigna & Aetna-Humana Mergers: A Post Mortem**

Thurs, 9/14, 12:00-1:30 PM, free for academics, \$25 for non-profits, \$50 for industry, **RSVP required**

Hotel InterContinental, 505 North Michigan Avenue, Chicago

Earlier this year, two federal courts issued rulings blocking the mergers between Anthem and Cigna and between Aetna and Humana. This panel brings current and former Kellogg faculty together who all played important roles in these cases, both as testifying experts and behind-the-scenes analysts representing both sides of both mergers. The panelists will discuss the key economic issues in the cases and how the healthcare system might have evolved if the outcomes had gone differently. They will also consider what is next in store for the health insurance industry. Panelists:

- Moderator: Mark McCareins, Clinical Professor of Business Law, Kellogg School of Management, Northwestern University
- David Dranove, Walter J. McNERney Professor of Health Industry Management, Kellogg School of Management, Northwestern University
- Cory Capps, Partner, Bates White (Washington, D.C.)
- Aviv Nevo, George A. Weiss and Lydia Bravo Weiss University Professor, University of Pennsylvania
- Mark Israel, Senior Managing Director, Compass Lexecon (Washington, D.C.)

### **Generation and Regeneration of the Lung (Edward E. Morrisey, University of Pennsylvania)**

Fri, 9/15, 12:00-1:00 PM

Lurie Medical Research Center, Baldwin Auditorium, 303 E. Superior

Contact: Kari LeBeau, 312-503-0344, [k-lebeau@northwestern.edu](mailto:k-lebeau@northwestern.edu)

The Morrisey lab focuses on the developmental pathways and factors that are critical for building the cardiopulmonary system. Using a combination of mouse genetics, biochemistry, and genomic analysis, they seek to better understand how the lung and heart develop, how developmental pathways are disrupted in human cardiopulmonary disease, and whether such pathways and factors can be harnessed to promote pulmonary and cardiac regeneration in the adult.

### **Landsberg Society Update in the Science and Practice of Medicine**

Fri, 9/15, all day

259 E. Erie, Chicago

Contact: Linda Farrell Carey, 312-908-1892, [lcarey@northwestern.edu](mailto:lcarey@northwestern.edu)

Earlier this year, The Lewis Landsberg Society was launched to connect Department of Medicine residency alumni and faculty through education and social events. Please join us at our first conference in September 2017!

### **39<sup>th</sup> Annual Echo Northwestern Conference**

Sat, 9/16, all day

Northwestern Memorial Hospital Feinberg Pavilion, 3<sup>rd</sup> Floor Conference Room, 251 E. Huron, Chicago

Contact: Heather Munn, 312-695-0363, [hmunnn@nm.org](mailto:hmunnn@nm.org)

Principles of echocardiography will be reviewed and advances will be demonstrated through lectures and case studies. Participants will be exposed to all aspects of basic and advanced echocardiography. Daily sessions will be devoted to state of the art lectures on advances in echocardiography and specific application. This continuing medical education program is designed to meet the educational needs of cardiologists, cardiology fellows, anesthesiologists, surgeons, sonographers and nurses who have a need for echo expertise. A minimum of three months experience in echocardiography and knowledge of basic transesophageal anatomy and physiology of the heart is required.

### **Regulation of Synaptic Plasticity by Anchored Kinase and Phosphatase Signaling Complexes (Mark Dell'Acqua, Colorado – Denver)**

Mon, 9/18, 4:00-5:00 PM

Ward Building, Room 5-230, 303 E. Chicago Ave, Chicago

Contact: Alexa Nash, 312-503,4893, [alexa.nash@northwestern.edu](mailto:alexa.nash@northwestern.edu)

The Dell'Acqua laboratory studies receptor-second messenger and kinase/phosphatase signaling in the nervous system. In particular, they study the role of A-kinase anchoring protein (AKAP) 79/150 anchoring of the cAMP-dependent protein kinase (PKA) and the Ca<sup>2+</sup>-dependent protein phosphatase 2B-calcineurin (CaN) in regulating signaling by neuronal L-type voltage gated calcium channels and AMPA and NMDA glutamate receptors during excitatory synaptic plasticity. We seek to understand how PKA and CaN in these signaling complexes rapidly control AMPA receptor and L-channel phosphorylation, activity, trafficking, and signaling to the nucleus during hippocampal long-term potentiation (LTP) and long-term depression (LTD).

**Women's Health Research Institute Monthly Forum (Patricia Vassallo, Northwestern)**

*Tues, 9/19, 12:00-1:00 PM*

*Prentice Women's Hospital, 250 E. Superior, Chicago*

*Contact: Nicole Weitowich, Nicole.weitowich@northwestern.edu*

The Women's Health Research Monthly Forums were introduced by the Institute in September 2008. The monthly forums were developed to address a significant barrier to advancing women's health research: lack of awareness among health professionals and researchers that sex and gender matter in health and disease. Through the monthly forums, the Institute provides a platform for leading professionals to present their evidence-based research that focuses on basic science, clinical applications, or social implications of sexual dimorphisms. Each month over 200 faculty and staff from Northwestern University and Northwestern Memorial Hospital attend the forum - some are new attendees and many more are returning attendees who have come back for additional authoritative women's health knowledge.

**Science at Low Frequencies with the Long Wavelength Array (Greg Taylor, University of New Mexico)**

*Tues, 9/19, 4:00-5:00 PM*

*Tech F160, 2145 Sheridan Rd, Evanston*

*Contact: Pamela Villalovoz, 847-491-3644, pmv@northwestern.edu*

The Long Wavelength Array (LWA) is a new multi-purpose radio telescope operating in the frequency range 5-88 MHz with many different operational modes. Scientific programs include (1) the high-z universe, including distant radio galaxies and clusters - tools for understanding the earliest black holes and the cosmological evolution of Dark Matter and Dark Energy; (2) planetary, solar, and space science, including space-weather prediction and extra-solar planet searches; (3) studies of the Earth's ionosphere; and (4) the radio transient universe including the recent discovery of self-emission from meteors.

**Activity-Based Proteomics: Protein and Ligand Discovery on a Global Scale (Benjamin Cravatt, Scripps Research Institute)**

*Wed, 9/29, 4:00-5:00 PM*

*Tech, Ryan Family Auditorium, 2145 Sheridan Rd, Evanston*

*Contact: Tiffany Leighton Ozima, 847-467-2303,*

*tiffany.ozmina@northwestern.edu*

Genome sequencing projects have revealed that eukaryotic and prokaryotic organisms universally possess a huge number of uncharacterized proteins. The functional annotation of these proteins should enrich our knowledge of the biochemical pathways that support human physiology and disease, as well as lead to the discovery of new therapeutic targets. To address these problems, we have introduced chemical proteomic technologies that globally profile the functional state of proteins in native biological systems.

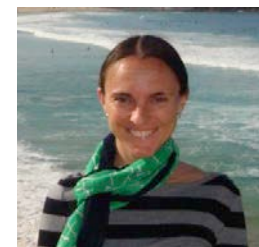
**Simulating Within-Vector Generation of Malaria Parasite Diversity (Lauren Childs, Harvard)**

*Mon, 9/25, 4:00-5:00 PM, free*

*Tech M416, 2145 Sheridan Rd, Evanston*

*Contact: Beth Siculan, 847-491-3345, b-siculan@northwestern.edu*

*Plasmodium falciparum*, the malaria parasite causing the most severe disease in humans, undergoes an asexual stage within the human host, and a sexual stage within the vector host, *Anopheles* mosquitoes. Because mosquitoes may be super-infected with parasites of different genotypes, this sexual stage of the parasite life-cycle presents the only opportunity in the full life cycle to generate large genetic differences in parasites through recombination. To investigate the role that mosquitoes' biology plays on the generation of parasite diversity, we constructed a stochastic model of parasite development within-mosquito over its lifespan. We then coupled a model of sequence diversity generation via recombination between genotypes to the stochastic parasite population model.



**Structure-Guided Drug Discovery and Structural Genomics (Wayne F. Anderson, Northwestern)**

*Mon, 9/25, 4:00-5:00 PM*

*Ward Building 5-230, 303 E. Chicago Ave, Chicago*

*Contact: Alexa Nash, 312-503-4893, alexa.nash@northwestern.edu*

Structural genomics approaches and methods have greatly sped up structural biology research and are having an impact on structure-guided drug discovery. High throughput methods can rapidly provide detailed information on atomic interactions between small molecules and target proteins. Having access to the structures of sets of proteins that are desired targets in the presence of a variety of ligands as well as proteins that should not be targeted is an advantage for optimizing hits from screens. Another area that benefits from high throughput structure determination is function discovery. By examining whole systems of proteins that function together, structural insights can aid in defining the functions of the system and suggest further experiments. Examples taken from the work of the Center for Structural Genomics of Infectious Diseases will be used to illustrate applications of structural genomics approaches.





### **Electrical Engineering and Computer Science Distinguished Speaker**

**Moses Charikar, Stanford**

*Wed, 9/27, 2:00-3:00 PM*

*Ford Motor Company Engineering Design Center, ITW Room, 2133 Sheridan Road, Evanston*

*Contact: Lana Kiperman, lana#ece.northwestern.edu, 847-467-0028*

Moses Charikar is a professor of Computer Science at Stanford University. He obtained his PhD from Stanford in 2000, spent a year in the research group at Google,

and was on the faculty at Princeton from 2001-2014. He is broadly interested in the design and analysis of algorithms with an emphasis on approximation algorithms for hard problems, metric embeddings and algorithmic techniques for big data. His work on dimension reduction won the best paper award at FOCS 2003. He was awarded the 2012 Paris Kanellakis Theory and Practice Award for his work on locality sensitive hashing, and was named a Simons Investigator in theoretical computer science in 2014.

### **Understanding Your Adolescent/Teen**

*Thurs, 9/28, 12:00-1:00 PM*

*Lurie Medical Research Center, Gray Seminar Room, 303 E. Superior, Chicago*

*Contact: Anna Freedman, 847-467-6518, anna.freedman@northwestern.edu*

Adolescence can be a confusing and stressful time for both parents and teens. As adolescents mature, sometimes taking one step forward and two back, the parent-child relationship must also evolve. Having a better understanding of the behavior and needs of this age group can help. Following this seminar, participants will be better able to:

- Understand physical, intellectual, and emotional changes of adolescence
- Learn communication strategies for building a trusting relationship with their teen
- Effectively parent this often-challenging age group

### **Town Hall: Advances in Cancer Diagnostics and Treatment**

*Thurs, 9/28, 5:30-7:00 PM, free*

*Pancoe-NSUHS Life Sciences Pavilion, Abbott Auditorium 2200 Campus Drive, Evanston*

*Contact: Penelope Johnson, 847-467-7464, penelope.johnson@northwestern.edu*

Join us to discuss the next wave of cancer therapies. Moderated panel discussion and audience Q&A. Panelists:

- Jonathan D. Licht, MD, University of Florida
- Lucy A. Godley, MD, PhD, University of Chicago
- Thomas J. Meade, PhD, Northwestern University
- Carole Baas, PhD, National Cancer Institute

### **Barriers to Agricultural Intensification and Technological Innovation in West Africa (Chris Udry, Northwestern)**

*Fri, 9/29, 12:00-1:00 PM*

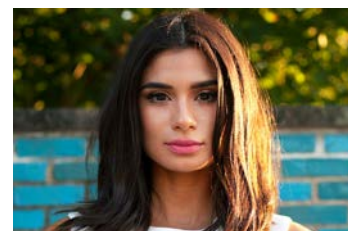
*Buffett Institute, 1902 Sheridan Rd, Evanston*

*Contact: Iszy Licht, 847-467-2770,*

*iszy.licht@northwestern.edu*

Farmers in most of West Africa make little use of non-labor inputs or formally improved seed technology. Agricultural productivity remains low, and this is the primary determinant of rural poverty. What are the roles of market failures in finance, information, and goods in driving this low productivity, and what are the implications of these failures for policies that might alleviate rural poverty? This will be a discussion of the results of a seven-year investigation into the structure of financial markets.

Chris Udry is a Buffett Institute Faculty Fellow and the King Professor of Economics. His research interests focus on rural economic activity in Sub-Saharan Africa.



### **In the Country We Love: My Family Divided (Diane Guerrero, actor and immigration reform advocate)**

*Tues, 10/3, 6:00-7:30 PM, free*

*Tech, Ryan Family Auditorium, 2145 Sheridan Rd, Evanston*

*Contact: Carlos Octavio Ballinas, carlos.ballinas@northwestern.edu, 847-467-3980*

Diane Guerrero is a Boston native and has, since an early age, had an affinity with the arts and is best known for her roles as "Maritza Ramos" in the award-winning, Emmy- and Golden Globe-nominated Netflix series *Orange Is the New Black* (for which she received three Screen Actors Guild awards), and as "Lina" in CW's breakout hit, *Jane the Virgin*.

Diane's memoir, *In the Country We Love*, details her life as a citizen daughter of undocumented parents, and her years-long struggle to deal with the consequences of the broken immigration system.

In 2015, Diane was named a White House Ambassador for Citizenship and Naturalization. She is an outspoken advocate for common sense, comprehensive immigration reform and has worked with Immigrant Legal Resource Center; Mi Familia Vota, a nonpartisan Latino civic engagement organization to promote immigration reform and citizenship and voter registration.

# Parking

## Evanston

### **Evanston Campus Parking Services**

1841 Sheridan Rd., Evanston

847-491-3319

[parking@northwestern.edu](mailto:parking@northwestern.edu)

[www.northwestern.edu/up/parking](http://www.northwestern.edu/up/parking)

Open Monday-Friday, 8:00 AM – 4:00 PM

Permits are required to park in all lots on the Evanston campus every Monday through Friday from 8:00 AM to 4:00 PM. No permits are required to park on the Evanston campus after 4:00 PM or on weekends, though reserved spaces require permits at all times.

The cost of a guest permit is \$8.25 for a non-refundable, all-day pass. Visitors and guests may purchase a visitor permit at the Parking Services Office (see above for address) or at pay stations located in the North and South Parking Garages.

While there are many scattered parking lots on campus, the largest for guests include:

#### To the North

- North Campus Parking Garage (has a parking pay station): 2311 N. Campus Drive
- LARC Drive: North Campus Drive
- Noyes/Haven/Sheridan Lot: Haven Street & Sheridan Rd.

#### To the South

- South Campus Parking Garage (has a parking pay station and it is next to the parking office): 1847 Campus Drive
- South Beach Structure: 1 Arts Circle Drive
- Locy and Fisk Lot: 1850 Campus Drive
- 619 Emerson Lot
- 515 Clark Street
- 1801/1813 Hinman

#### To the West

- 1940 Sheridan Road (Engelhart)
- 2020 Ridge North Lot (University Police)
- 1948 Ridge Lot (University Police)
- ITEC Lot: University Place & Oak Avenue

## Chicago

### **Chicago Campus Transportation and Parking**

710 N. Lakeshore Dr., Abbott Hall Room 100, Chicago

312-503-1103

[chicagoparking@northwestern.edu](mailto:chicagoparking@northwestern.edu)

[www.northwestern.edu/transportation-parking](http://www.northwestern.edu/transportation-parking)

Open Monday-Friday, 8:00 AM – 5:00 PM

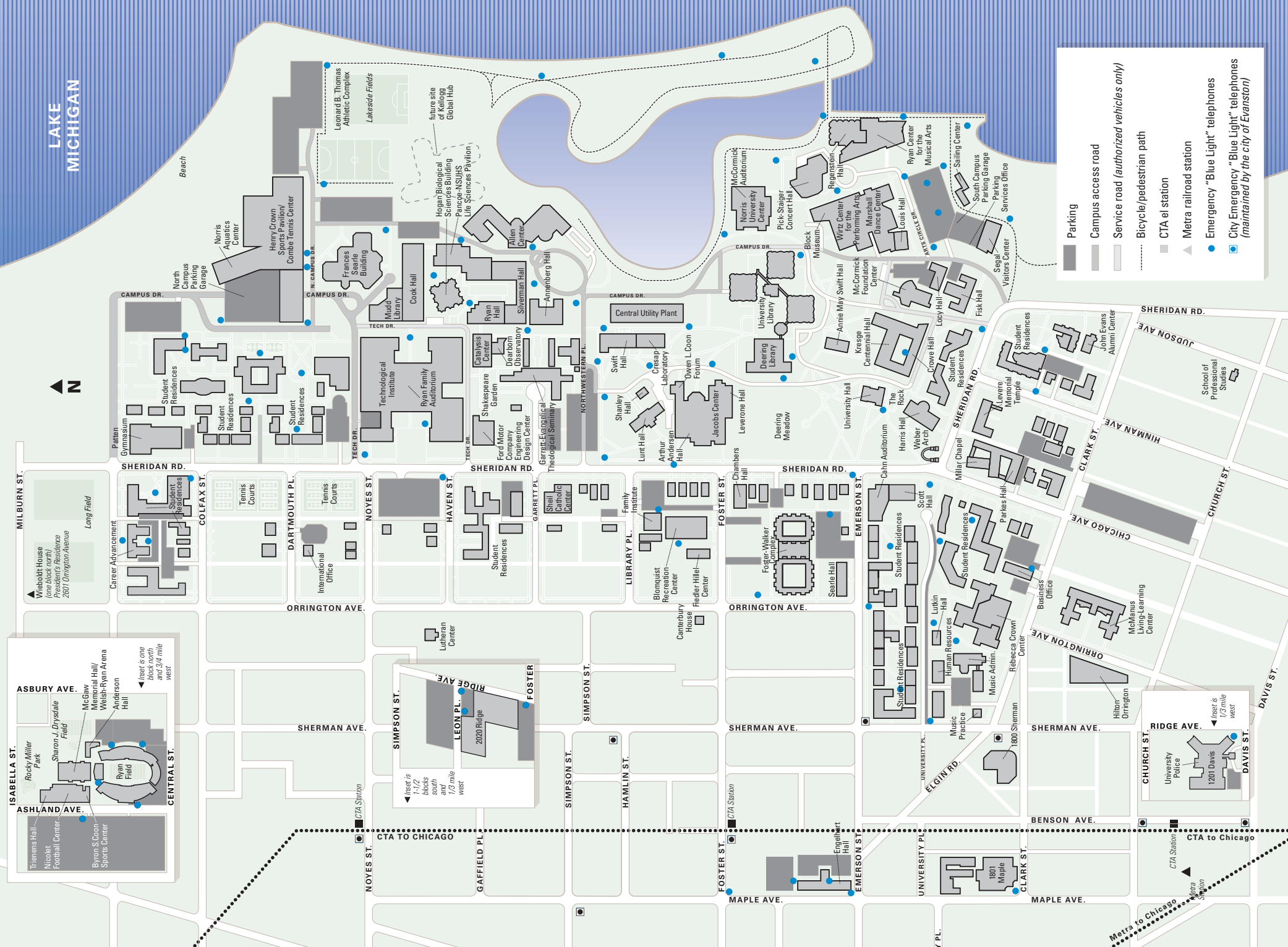
There is no free parking available on the Chicago campus but there are several options available for guests.

Public garages or Northwestern garages open to the public include:

- 275 E. Chestnut Street
- 222 E. Huron Street
- 710 N. Lake Shore Drive
- 680 N. Lake Shore Drive
- 259 E. Erie Street
- 321 E. Erie Street
- 441 E. Ontario Street

If you are going to the Chicago campus as the guest of a department, volunteer, participant in a study, or as a hospital patient, you can also contact the organizer of your event to inquire about potential discounted parking validations or passes.

◀ Z









# Northwestern University

## **Neighborhood and Community Relations**

1603 Orrington Avenue, Suite 1730

Evanston, IL 60201

[www.northwestern.edu/communityrelations](http://www.northwestern.edu/communityrelations)

## **Alan Anderson**

Executive Director

[alan.anderson@northwestern.edu](mailto:alan.anderson@northwestern.edu)

847-467-5762

This edition written with assistance from Claire Sepkowski.

**To receive this publication electronically every month, please email Carol Chen at [carol.chen@northwestern.edu](mailto:carol.chen@northwestern.edu)**

*Back cover image:* A window into a university for all seasons. Spring and architecture, summer and the Weber Arch, fall outside the Main Library, and Deering Library under a blanket of snow.



Northwestern University

NEIGHBORHOOD AND COMMUNITY RELATIONS